





## DORA (D)

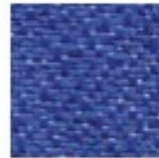
Váha (g/m <sup>2</sup> )	350
Otěruvzdornost (cykly)	30.000
Složení	100% POLYESTER
Čištění a údržba potahů	   



D2



D3



D4



D5



D6



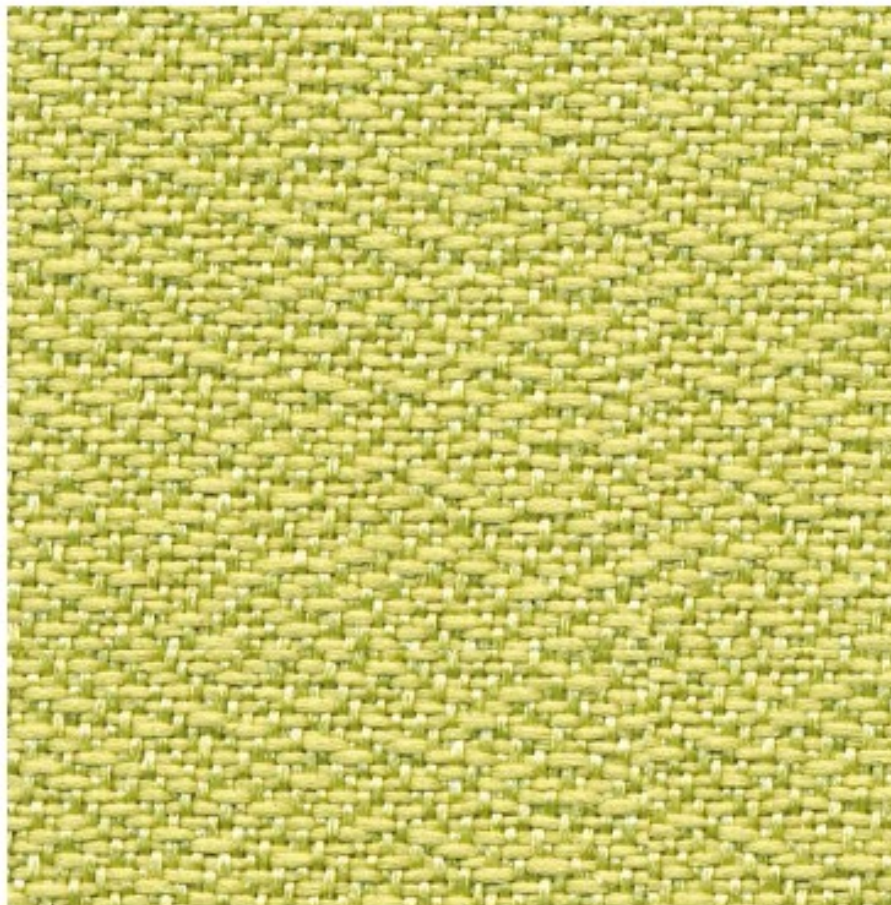
D7



D8



D9



## BONDAI (BN)

Váha (g/m <sup>2</sup> )	350
Otěruvzdornost (cykly)	150.000
Složení	100% POLYESTER
Čištění a údržba potahů	



BN1



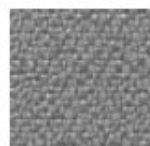
BN2



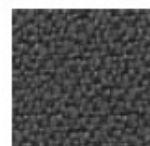
BN3



BN4



BN5



BN6



BN7



BN8



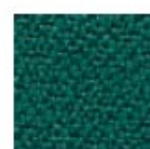
BN12



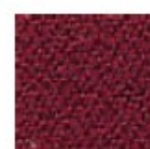
BN13



BN14



BN15



BN16



BN17



BN18



BN19



BN20



BN21



BN22



BN23



BN24



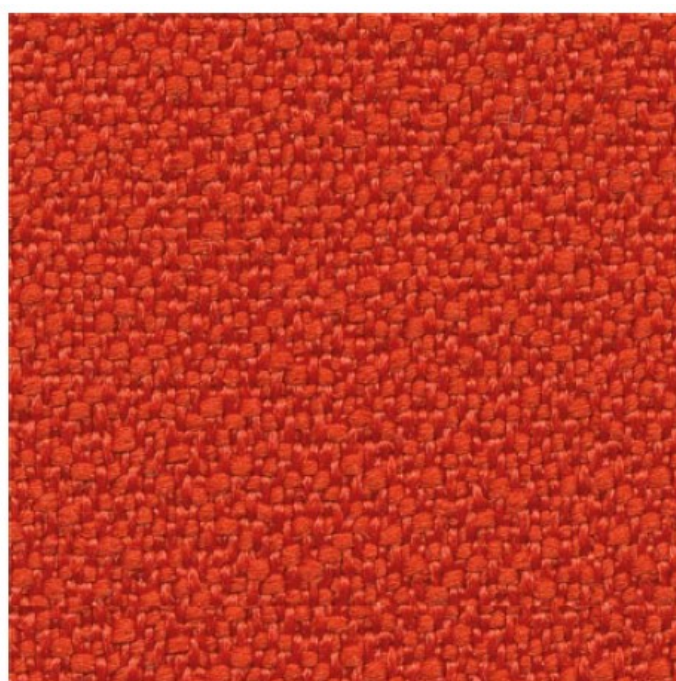
BN25




BN29



BN31

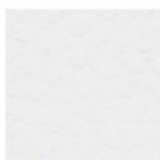


## SKAI (SK)

Váha (g/m <sup>2</sup> )	550
Otěruvzdornost (cykly)	30.000
Složení	Nosič 100% POLYESTER, povrch 100% PVC vodu odpuzující
Čištění a údržba potahů	



SK01



SK02



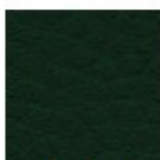
SK03



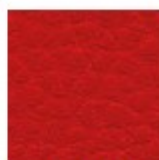
SK04



SK05



SK06



SK07



SK08



SK10



SK11




SK12



SK13



## BLOOM (BO)

Váha (g/m <sup>2</sup> )	550
Otěruvzdornost (cykly)	50.000
Složení	85% PVC + 15% PES
Čištění a údržba potahů	



B02



B08



B015



B017



B022



B027



B029



B036




B039

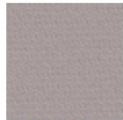


B050



## VISUAL (VIS)

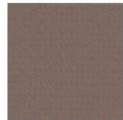
Váha (g/m <sup>2</sup> )	460
Otěruvzdornost (cykly)	120.000
Složení	100% POLYESTER
Čištění a údržba potahů	



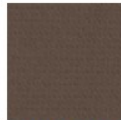
VIS001  
*skladem*



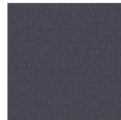
VIS002



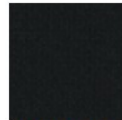
VIS003



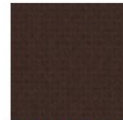
VIS004



VIS005



VIS006  
*skladem*



VIS007



VIS008



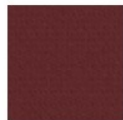
VIS009



VIS010



VIS012  
*skladem*



VIS013



VIS014



VIS015



VIS016



VIS017



VIS018



VIS019



VIS020



VIS021  
*skladem*



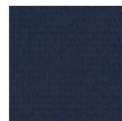
VIS022



VIS023  
*skladem*



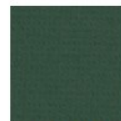
VIS024



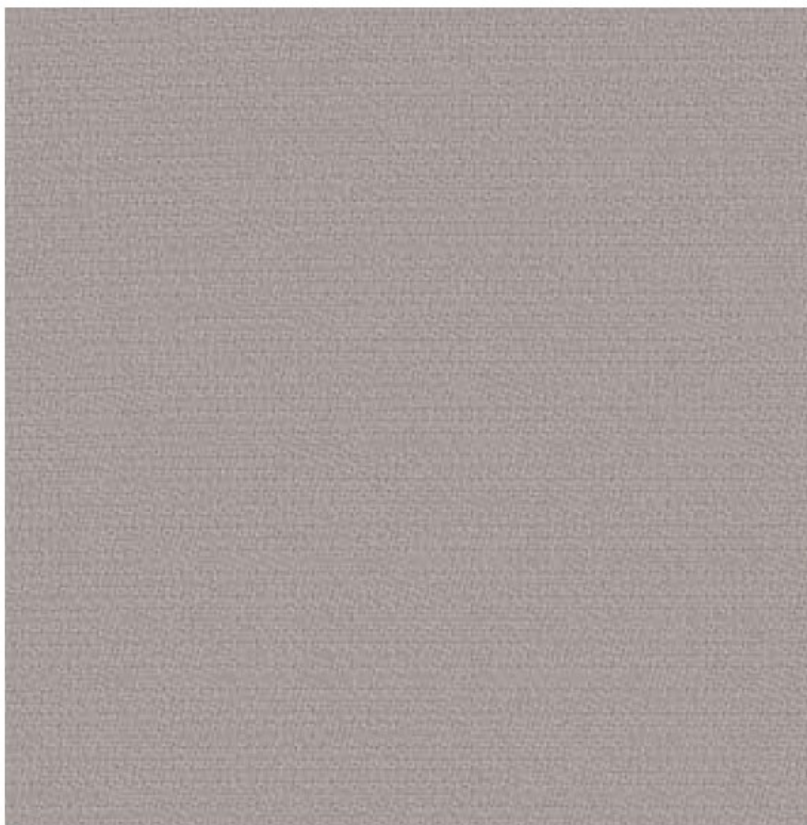
VIS025




VIS026



VIS027



## VISUAL MELANGE (VIM)

Váha (g/m <sup>2</sup> )	460
Otěruvzdornost (cykly)	120.000
Složení	100% POLYESTER
Čištění a údržba potahů	



VIM101  
*skladem*



VIM102



VIM103



VIM104



VIM105



VIM108



VIM109



VIM110



VIM111



VIM112  
*skladem*



VIM113



VIM114



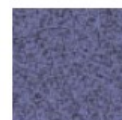
VIM115



VIM116



VIM117



VIM118



VIM119



VIM120



VIM121  
*skladem*



VIM122



VIM123  
*skladem*



VIM124



VIM126



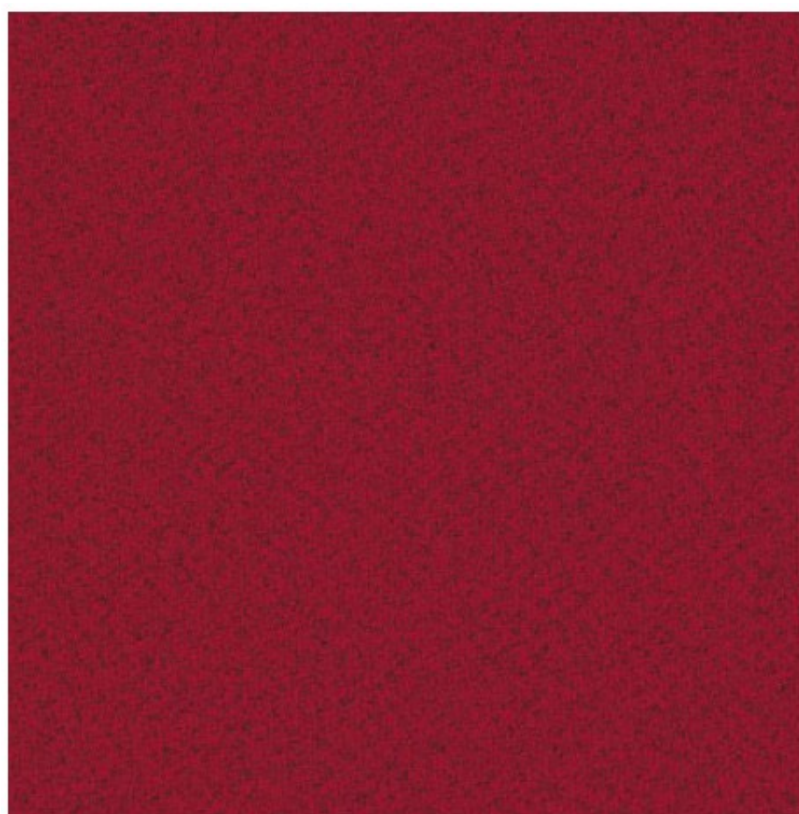
VIM127



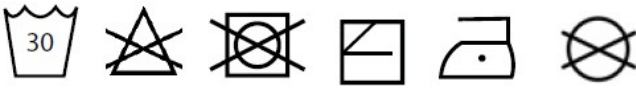
VIM128



VIM129



## MILTON (MT)

Váha (g/m <sup>2</sup> )	420
Otěruvzdornost (cykly)	150.000
Složení	97% PES (polyester) + 3% NY (nylon)
Čištění a údržba potahů	



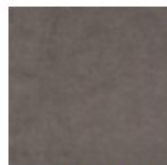
MT101



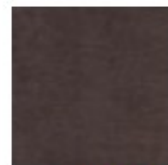
MT102



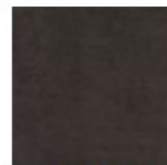
MT103



MT104



MT105



MT106



MT107



MT108



MT09



MT110



MT111



MT112



MT113



MT114



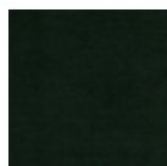
MT115



MT116



MT117



MT118



MT119



MT120



MT121



MT122



MT123



## RELIFE (RF)

Váha (g/m <sup>2</sup> )	460
Otěruvzdornost (cykly)	100.000
Složení	100% Post-consumer Recycled POLYESTER
Čištění a údržba potahů	Pravidelně vysávejte. V případě skvrn použijte vlhký hadřík s neutrálním mýdlem vhodný k čištění čalounických výrobků.



RF001



RF002



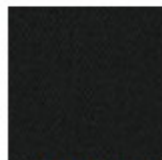
RF003



RF004



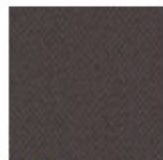
RF005



RF006



RF008



RF009



RF010



RF011



RF012



RF013



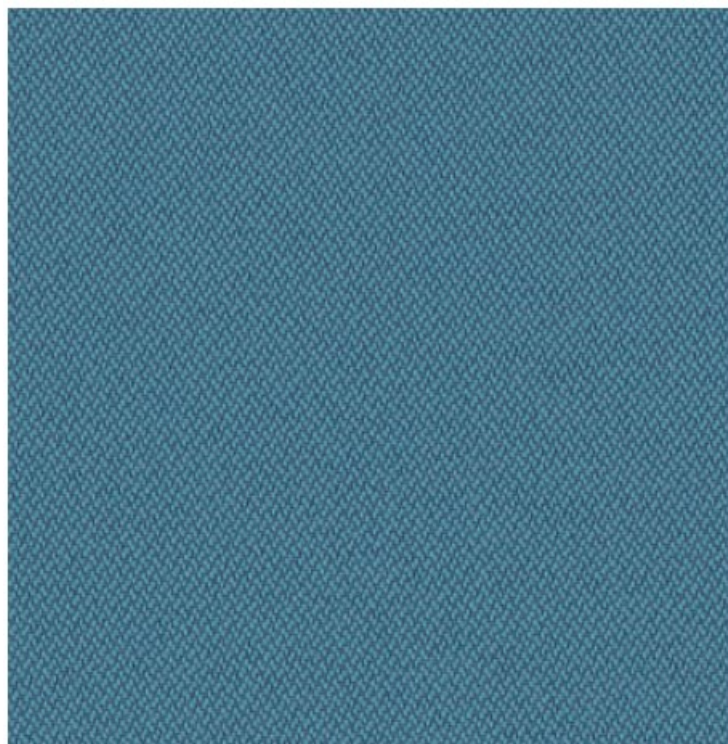
RF014



RF015




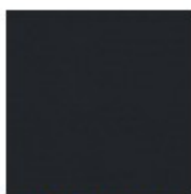
RF018





## CURA (CU)

Váha (g/m <sup>2</sup> )	420
Otěruvzdornost (cykly)	100.000
Složení	98% POST CONSUMER POLYESTER + 2% POLYESTER
Čištění a údržba potahů	



CU60111



CU60109



CU65105



CU64195



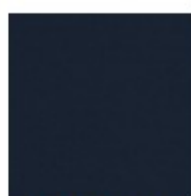
CU62083



CU68181



CU66170



CU66169



CU63078

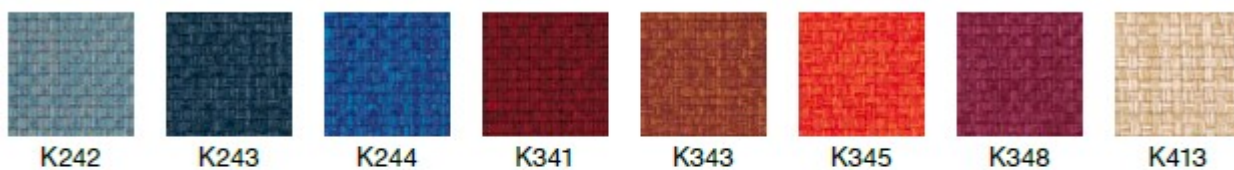
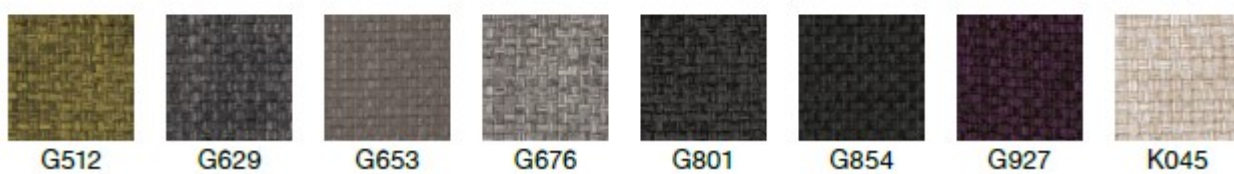
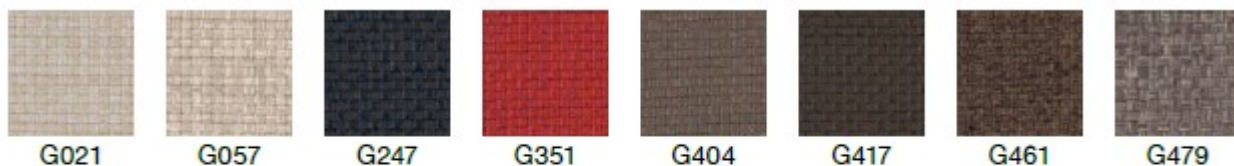


CU60110



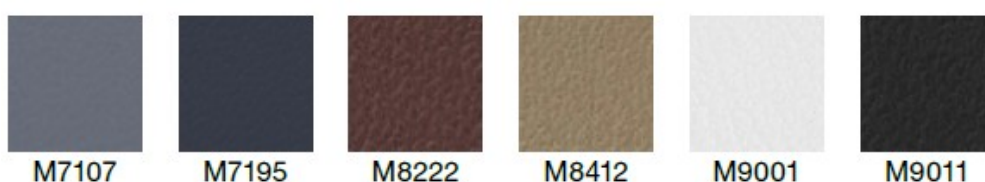
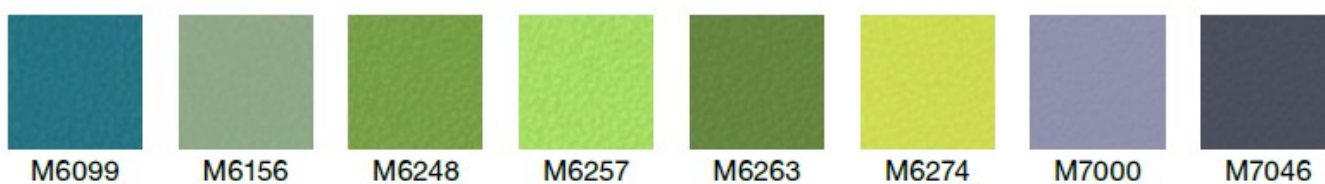
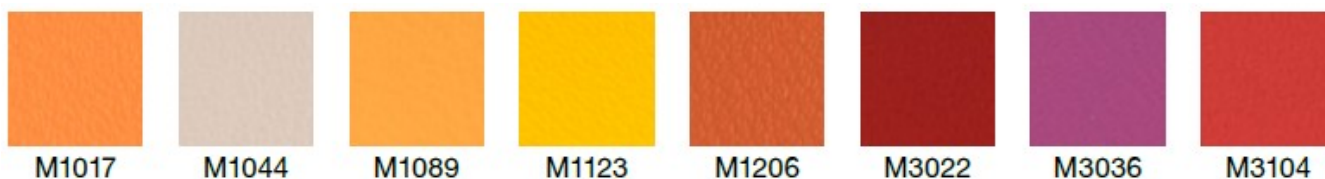
## FOUR (FO)

Váha (g/m <sup>2</sup> )	610
Otěruvzdornost (cykly)	80.000
Složení	100% POLYOLEFIN
Čištění a údržba potahů	



## MEDITAP (M)

Váha (g/m <sup>2</sup> )	652
Otěruvzdornost (cykly)	200.000
Složení	100% POLYVINYLCHLORID
Čištění a údržba potahů	Nečistoty otřete měkkým hadříkem namočeným v neutrálním mýdlovém roztoku. Tekuté nečistoty absorbujte papírovou utěrkou. Nepoužívejte chemická rozpouštědla.




# RALLY (RA)

---

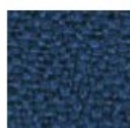


## EXTREME (X)

Váha (g/m <sup>2</sup> )	310
Otěruvzdornost (cykly)	100.000
Složení	100% POST CONSUMER POLYESTER
Čištění a údržba potahů	



YS004



YS005



YS009



YS024



YS026



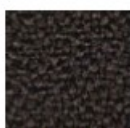
YS030



YS035



YS045



YS046



YS047



YS071



YS072



YS073



YS074



YS076



YS077



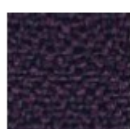
YS079



YS081



YS082



YS084



YS091



YS094



YS095



YS096



YS097



YS100



YS101



YS102



YS105



YS108



YS136



YS141



YS145



YS156



YS159



YS160



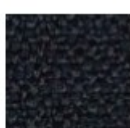
YS165



YS168



YS171



YS172



YS173



## FAME (F)

Váha (g/m <sup>2</sup> )	630
Otěruvzdornost (cykly)	200.000
Složení	95% New Zealand WOOL + 5% POLYAMIDE
Čištění a údržba potahů	



F68144



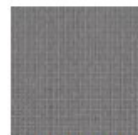
F68146



F60019



F60999



F60078



F60003



F66131



F66005



F64058



F64119



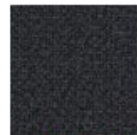
F62067



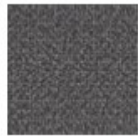
F63016



FH2801



FH1301



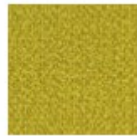
FH1201



FH2401



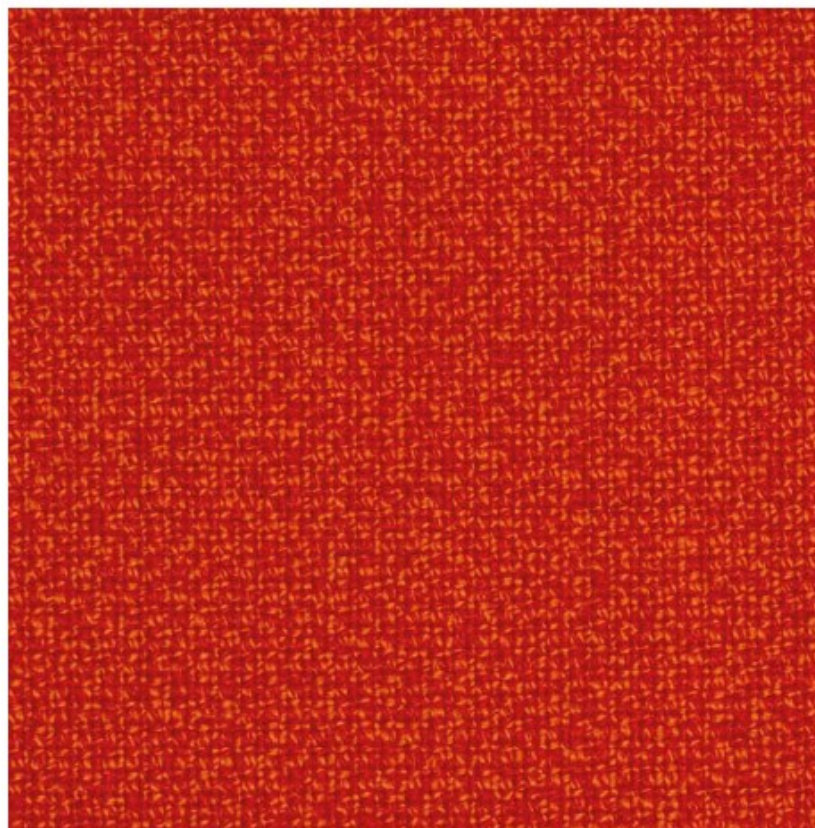
FH2201



FH2901



FH1901



## WOOL (W)

Váha (g/m <sup>2</sup> )	410
Otěruvzdornost (cykly)	50.000
Složení	100% PURE NEW WOOL
Čištění a údržba potahů	